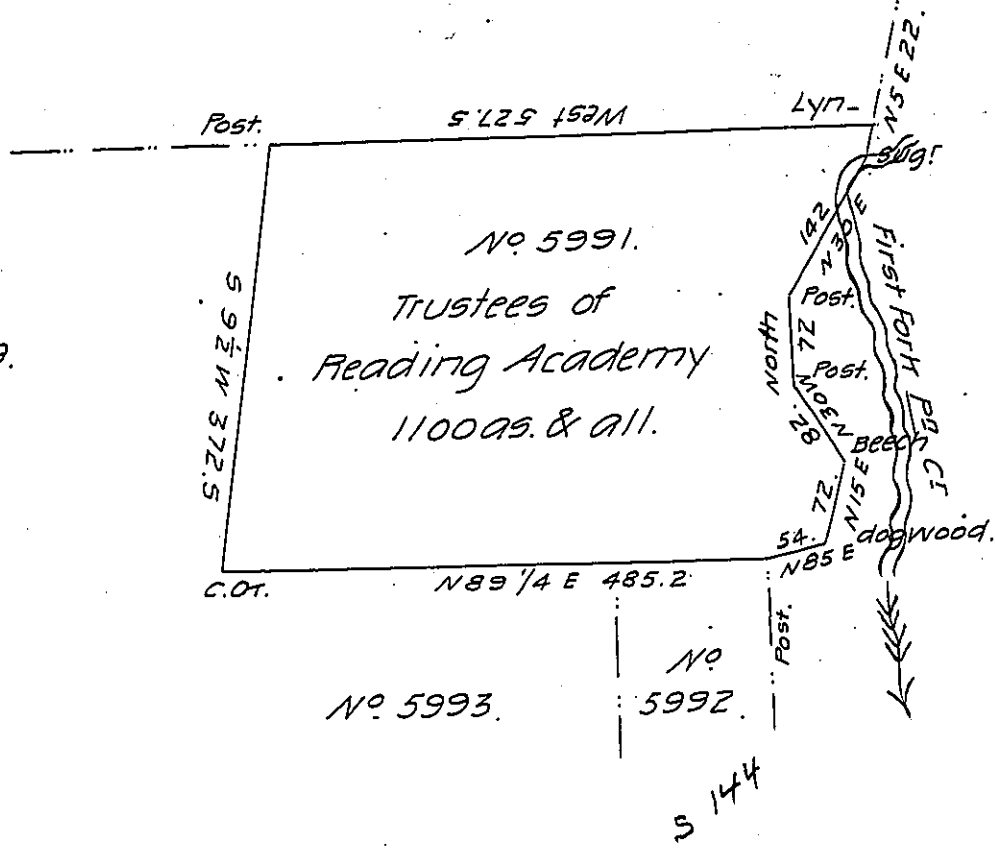


No. 5990.

No. 4409.



No. 5993.

No. 5992.

S 144

Draught of a tract of land situate on the waters of Pine creech
 about three miles above the first fork in Mifflin Township Lycorn-
 ing County Survey'd on the 19th of Sept^r 1814 for the Trustees of the
 Reading Academy, in pursuance of their warrant No. 5991 dated
 the 5th day of Sept^r 1805 Containing Eleven hundred acres and
 allowance of Six Pr. Ct. - Late Purchase.

Wm. Wilson D.S.

To Rich^d T. Leech Esqr.

Surveyor General.

IN TESTIMONY that the above is a copy of the original remaining on file in
 the Department of Internal Affairs of Pennsylvania, made
 conformably to an Act of Assembly approved the 16th day of
 February, 1833, I have hereunto set my Hand and caused
 the Seal of said Department to be affixed at Harrisburg,
 this thirty first day of July 1906.

Lauchlin Curran
 Secretary of Internal Affairs